



The Douro river provided a link between the inland communities and the ocean.

Porto is also the beginning of one of the most popular pilgrimages -Saint James tomb in Compostela

Porto is famous for exploring the coast of Spain and Morocco as well as other African trade Routes

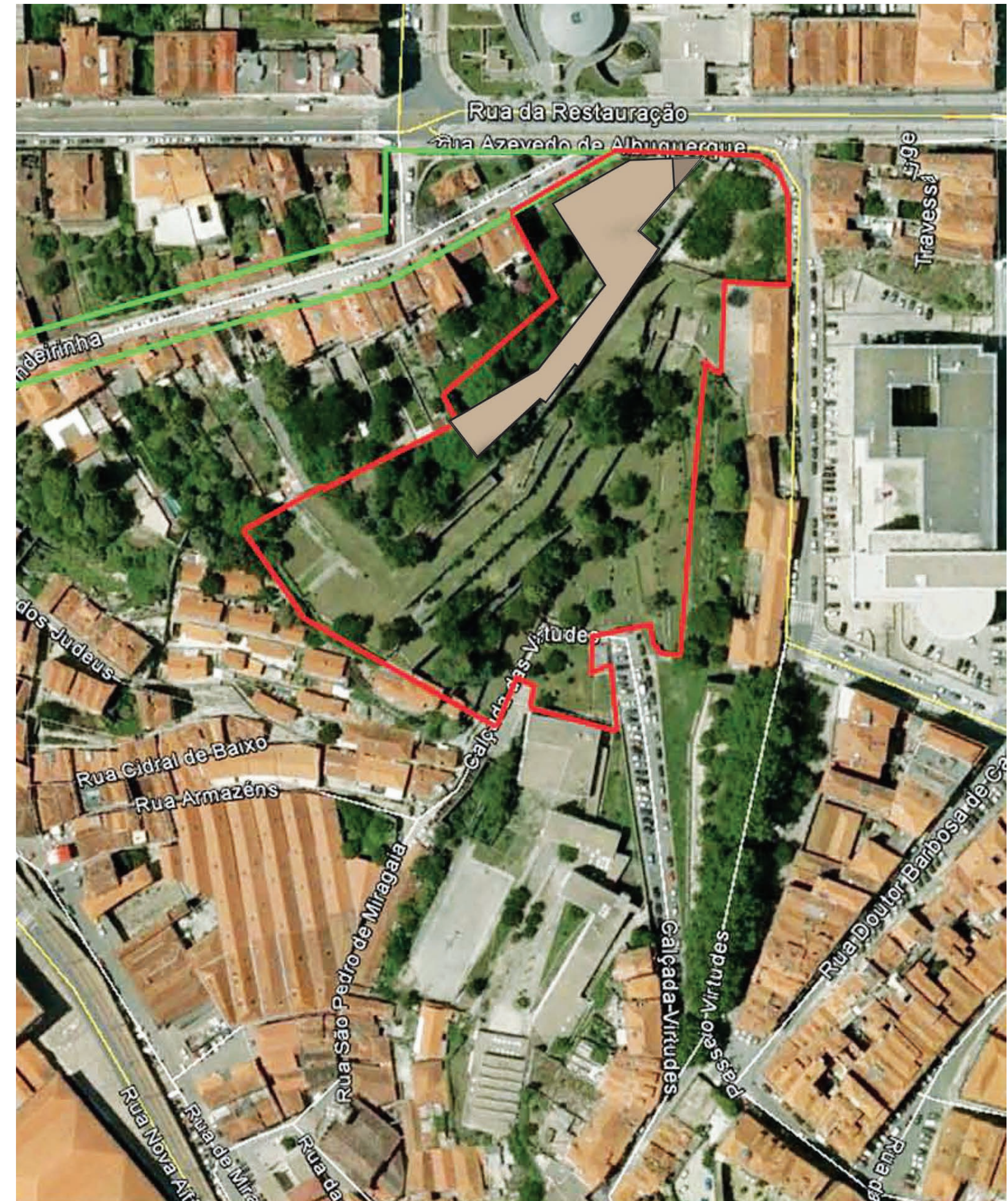
Their trade in fine meats and Port wine has continued into the 21st century

Shipbuilding, Mapping and trade were staples for the Portuguese starting in the 1200's Troubled times have come in waves and the culture has held on to the vineyards as the main commercial venture.

The parti of the river

As the Portuguese were fishing and trading in the past, the future should honor and celebrate that history

The site is an important garden that has flows into the river through the site valley; at several points the river has been pushed underground and comes out near the historical customs house. Fountains will be used to create river like connections at the museum and on site.

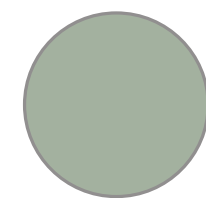
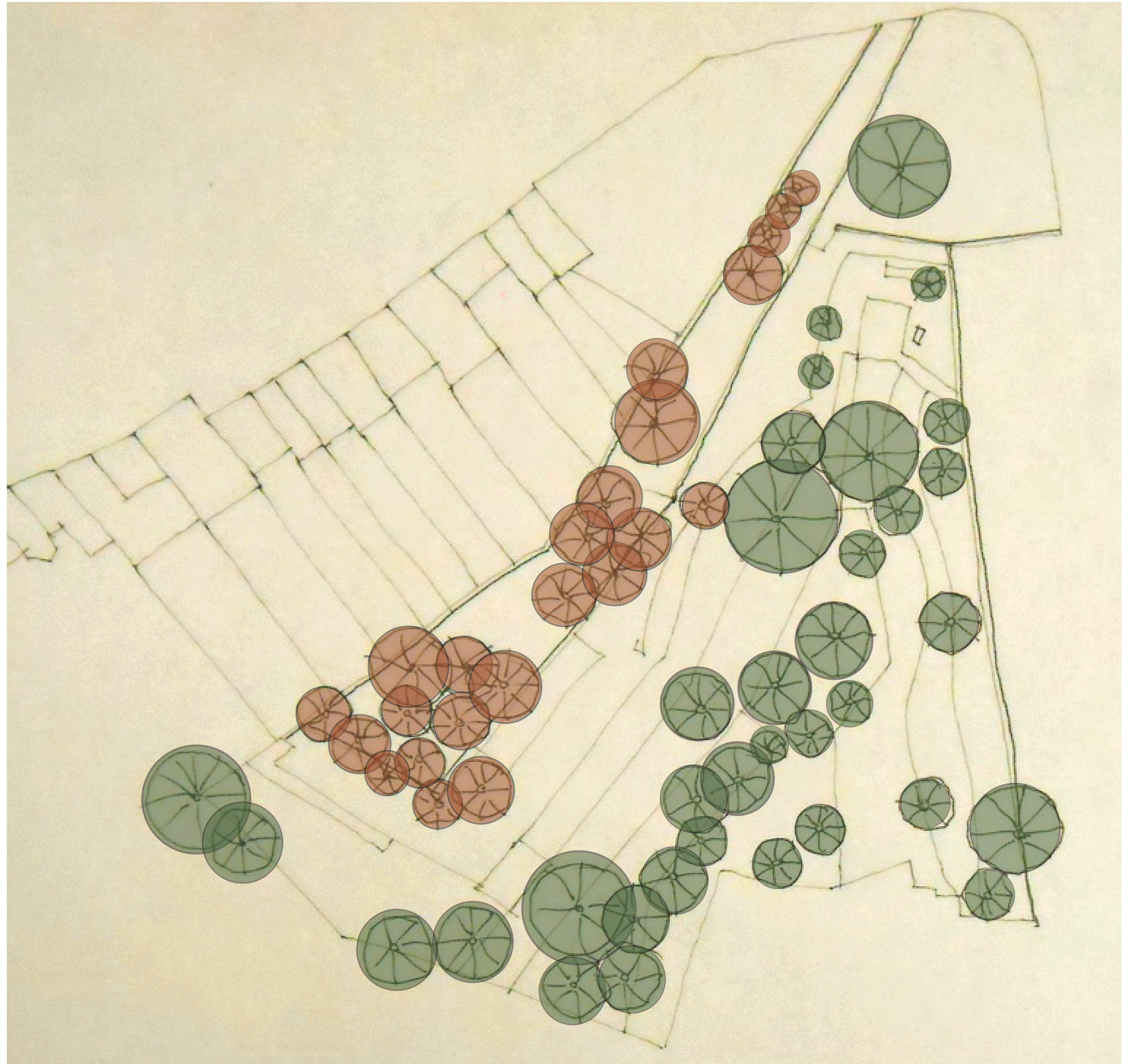
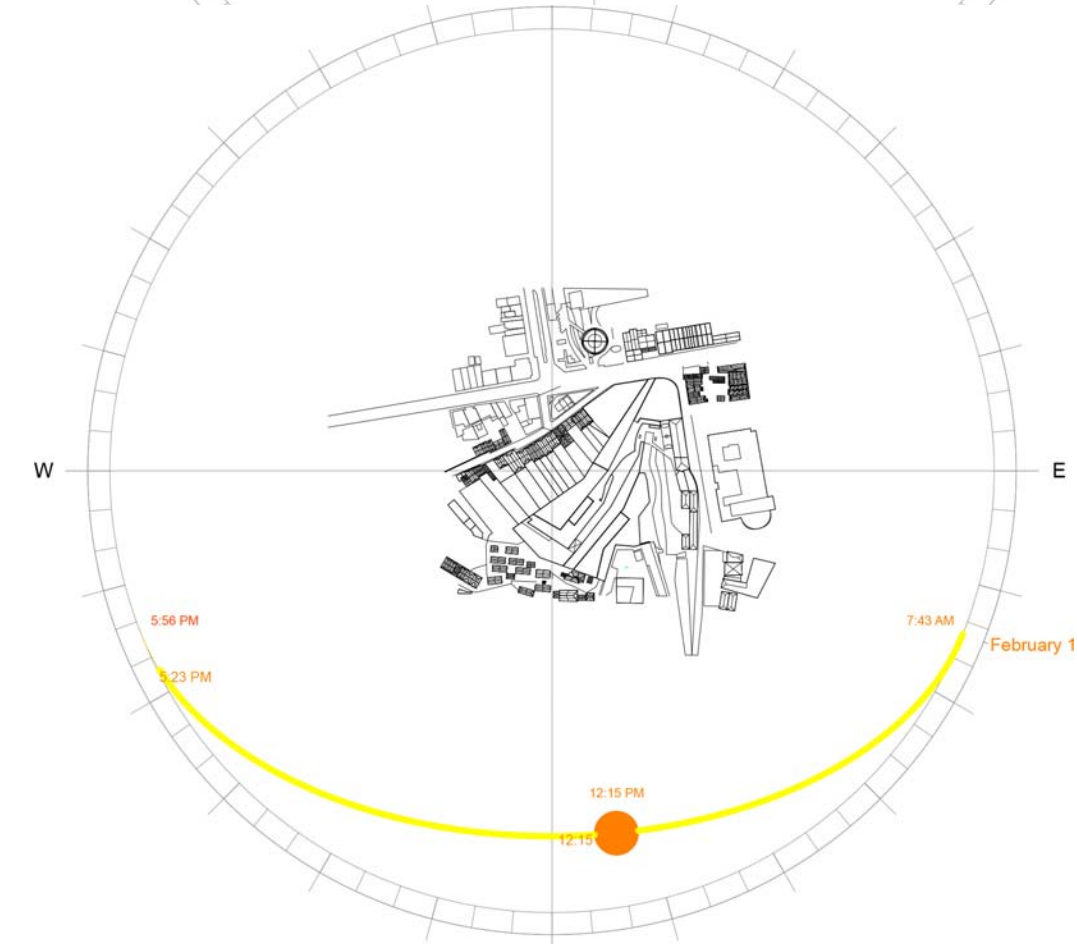
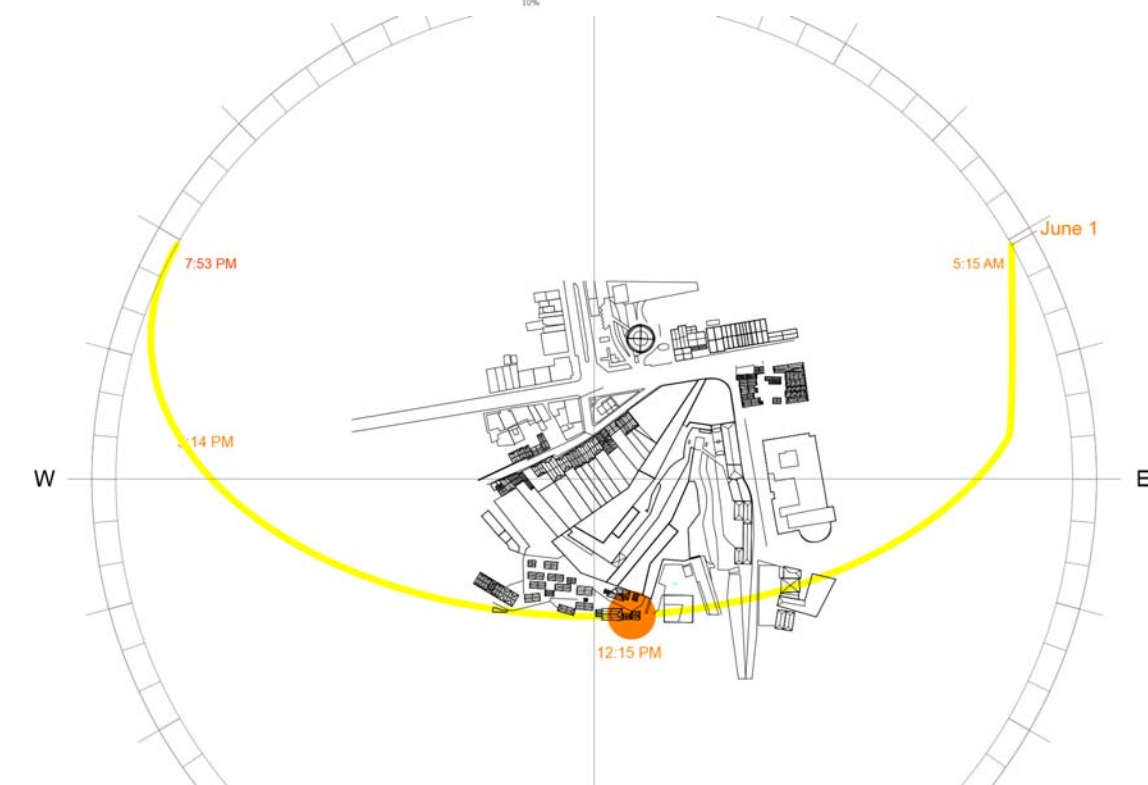
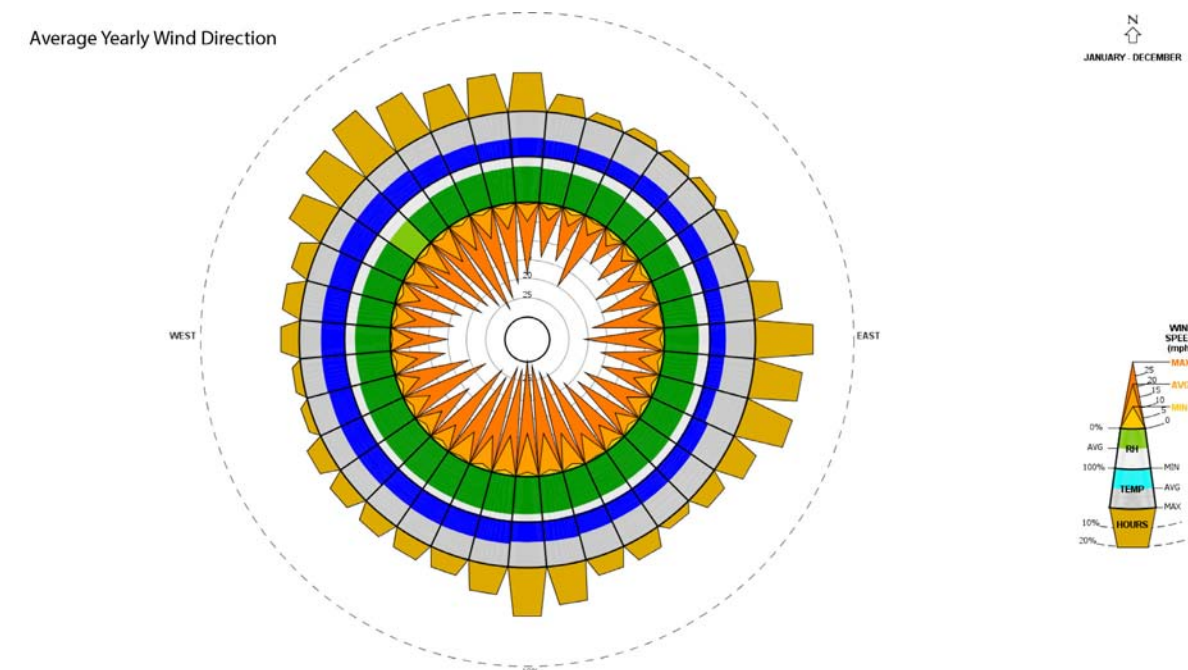
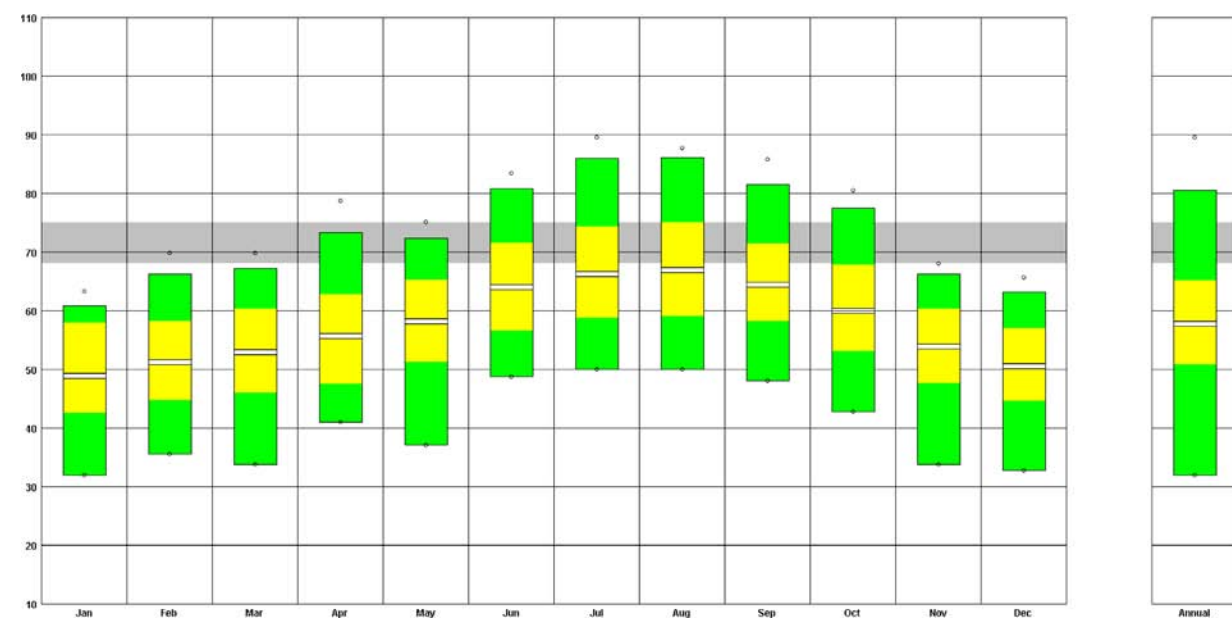


Proposed Museum of Architecture Existing Site Location Plan

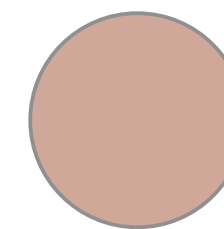
Porto by: Alvaro Siza

"the ground of Porto, my city, is possessed by demons. Rugged, granite that has over the centuries resisted hasty plans. The rows of houses roll along the hills and open up to squares, where possible: narrow inlets and inclined planes that no manual would suggest. With difficulty, the walls hold a fabric intent on fleeing;....The slopes demand walls of laboriously adapted stone, platforms embracing the landscape and following the essence of it logic, looking out into the Douro, to produce the wine that nourishes the city, wine that pays for the gardens inserted in the blocks, in the great quinte on the river..."[1]

[1]Alvaro Siza, "Oporto", in Burgo, number zero, June 1988, page 20

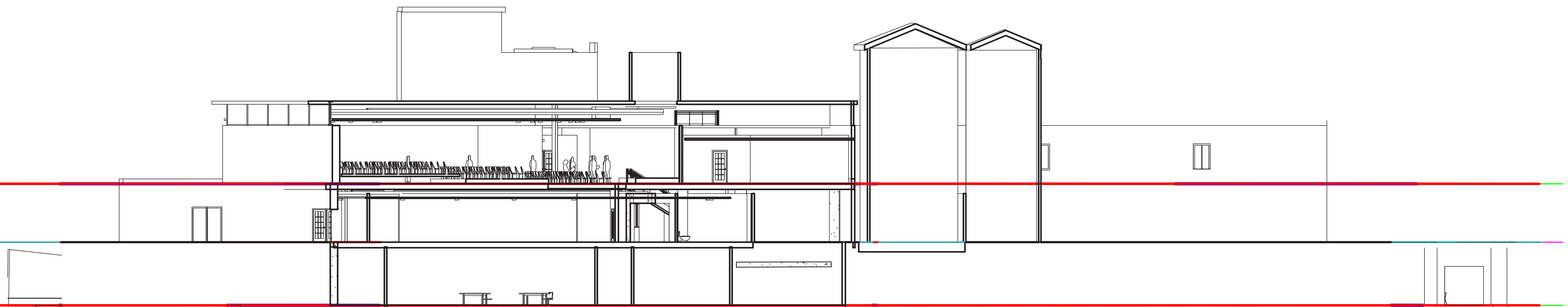
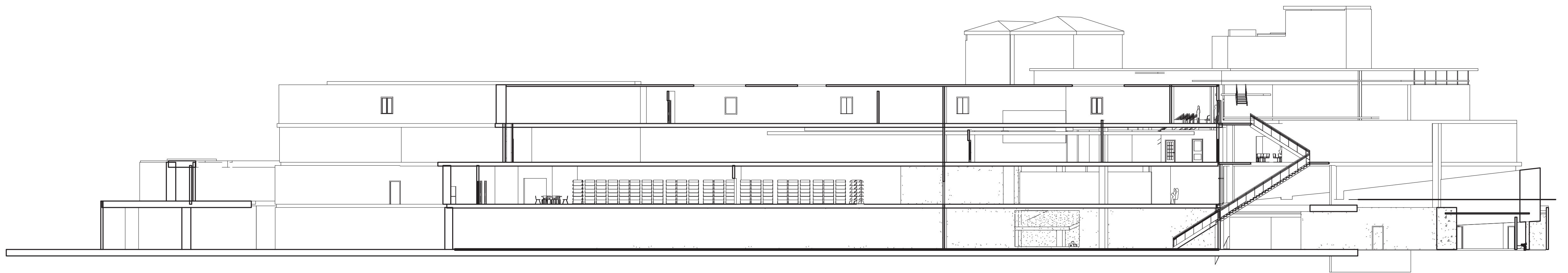


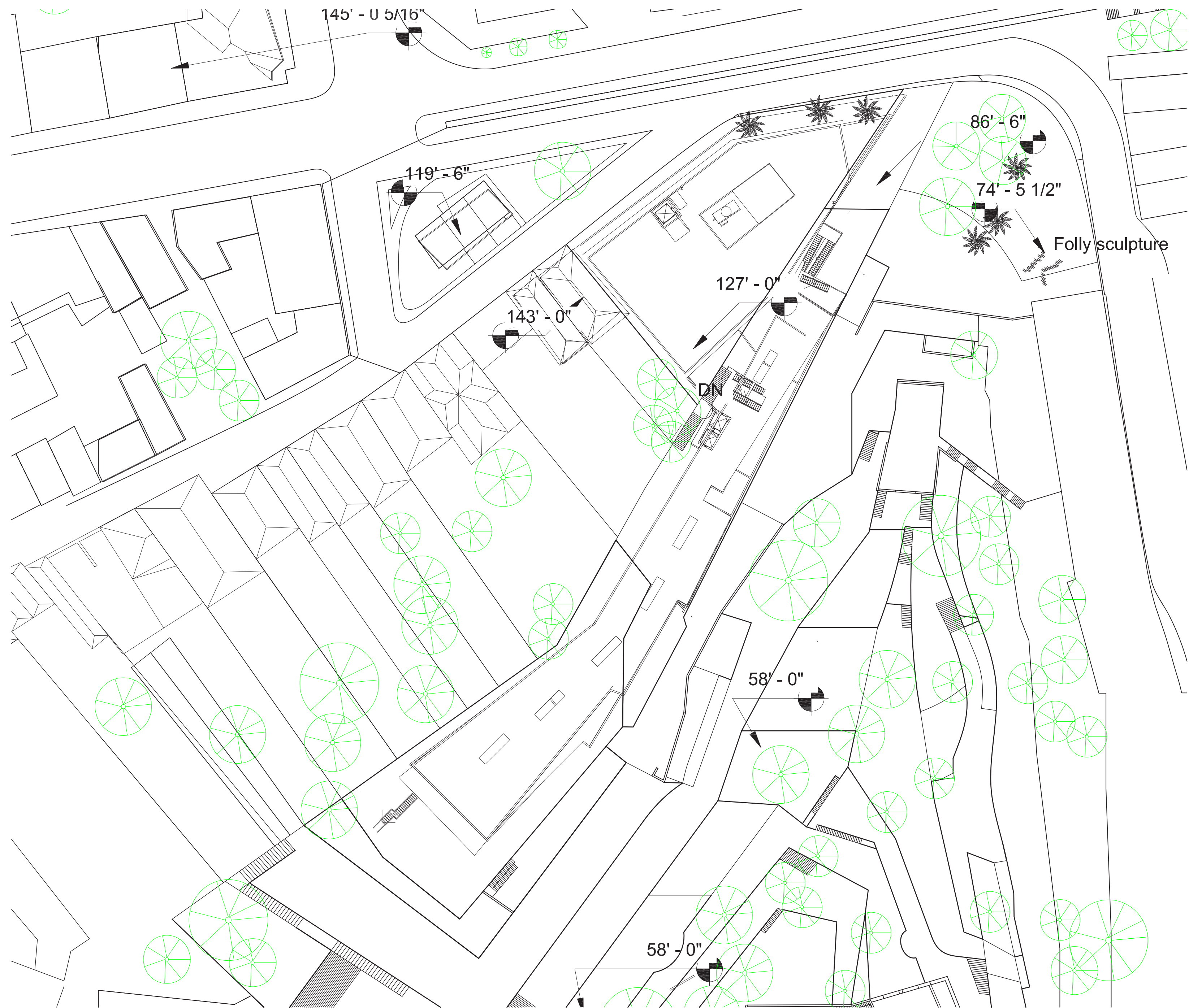
Trees to be pre-
served



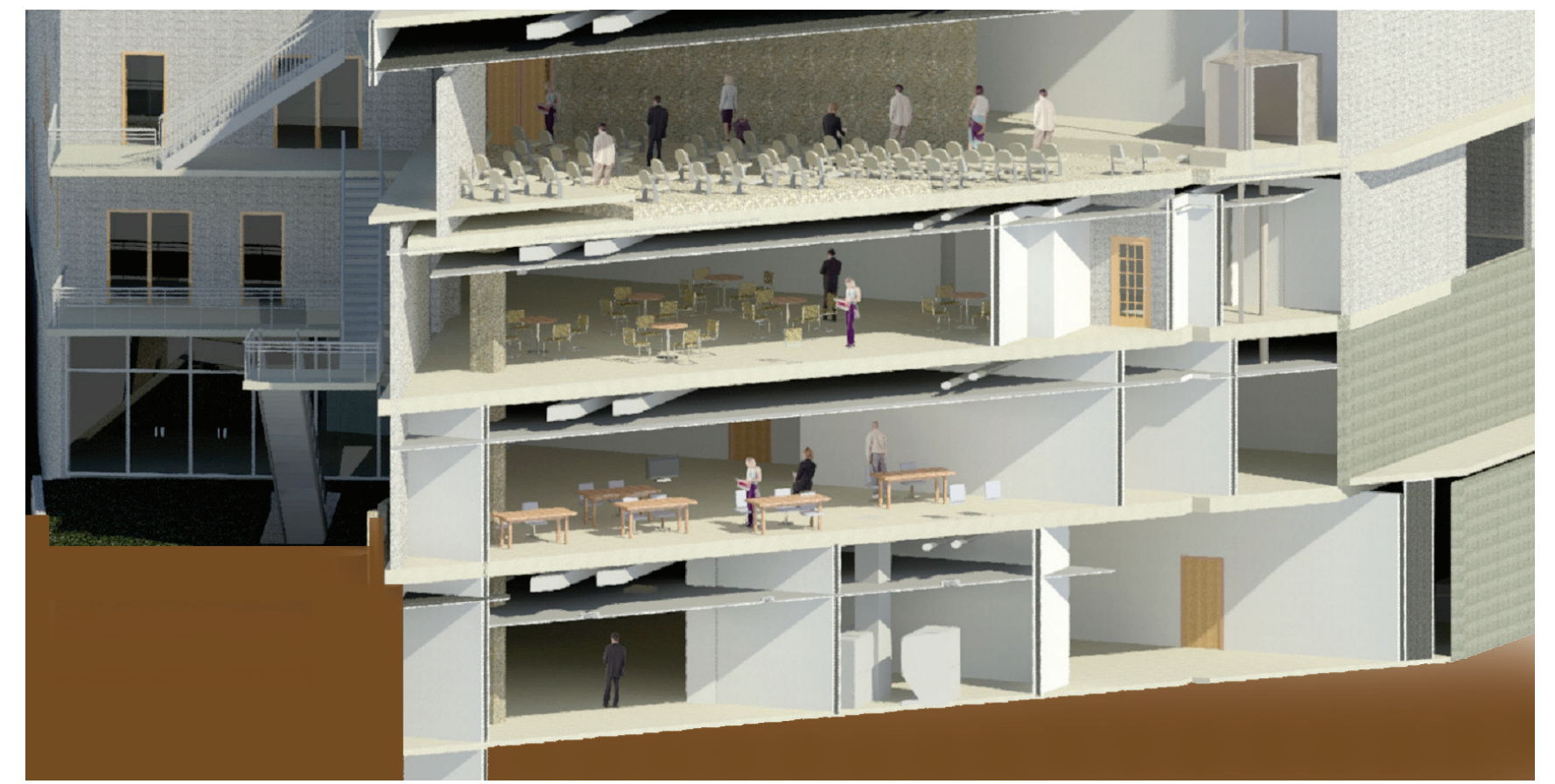
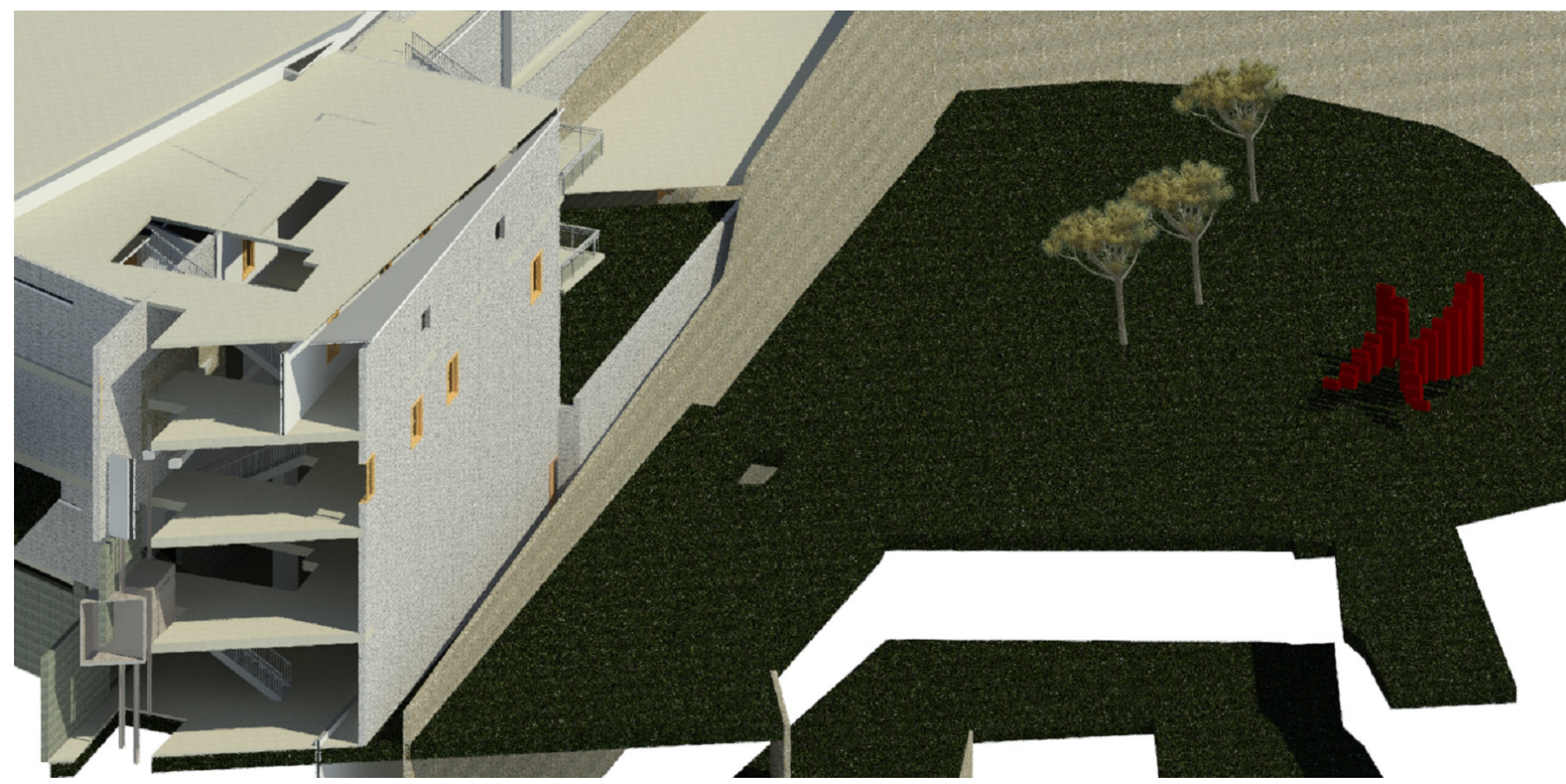
Replaceable-
Trees

Site conditions 1/32"=1'











Exterior Marble



Interior Gallery spaces

Museum Materials:

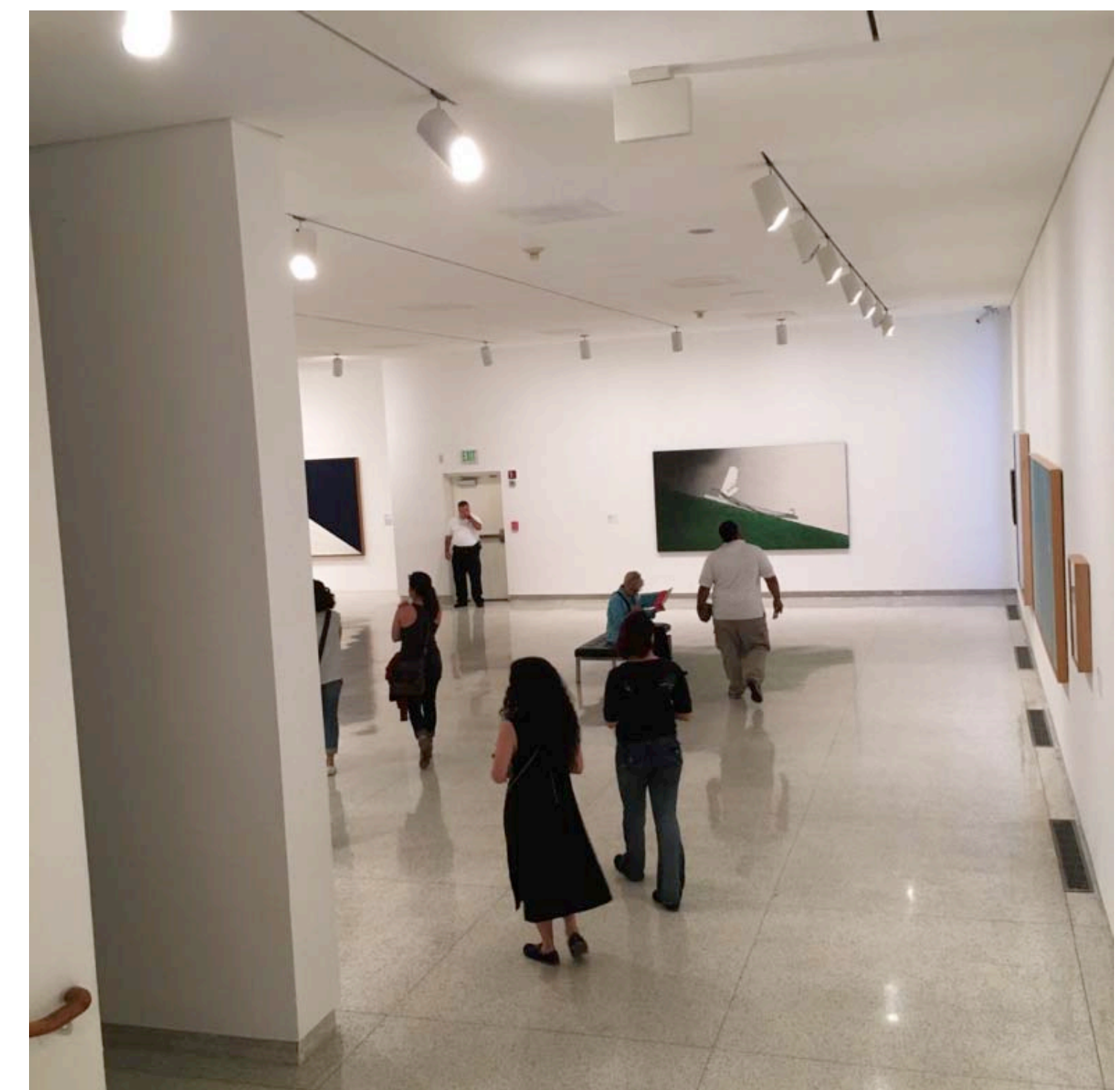
Marble and Granite for durability and warmth

Light colors in galleries to enhance the exhibitions

Natural light and LED lighting

Simple palette that does not interfere with enjoyment of the art

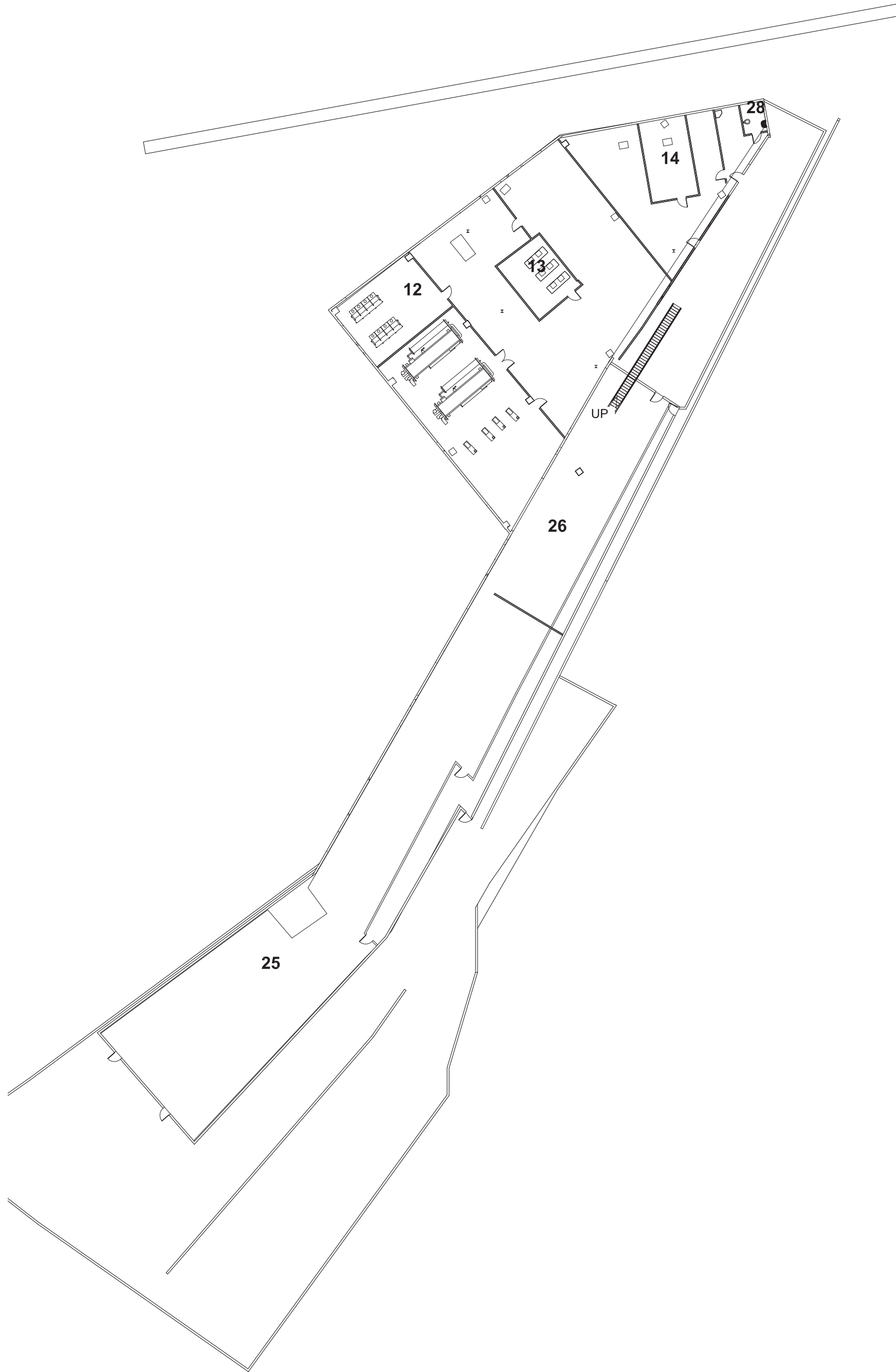
Natural landscape of the site



Material choices

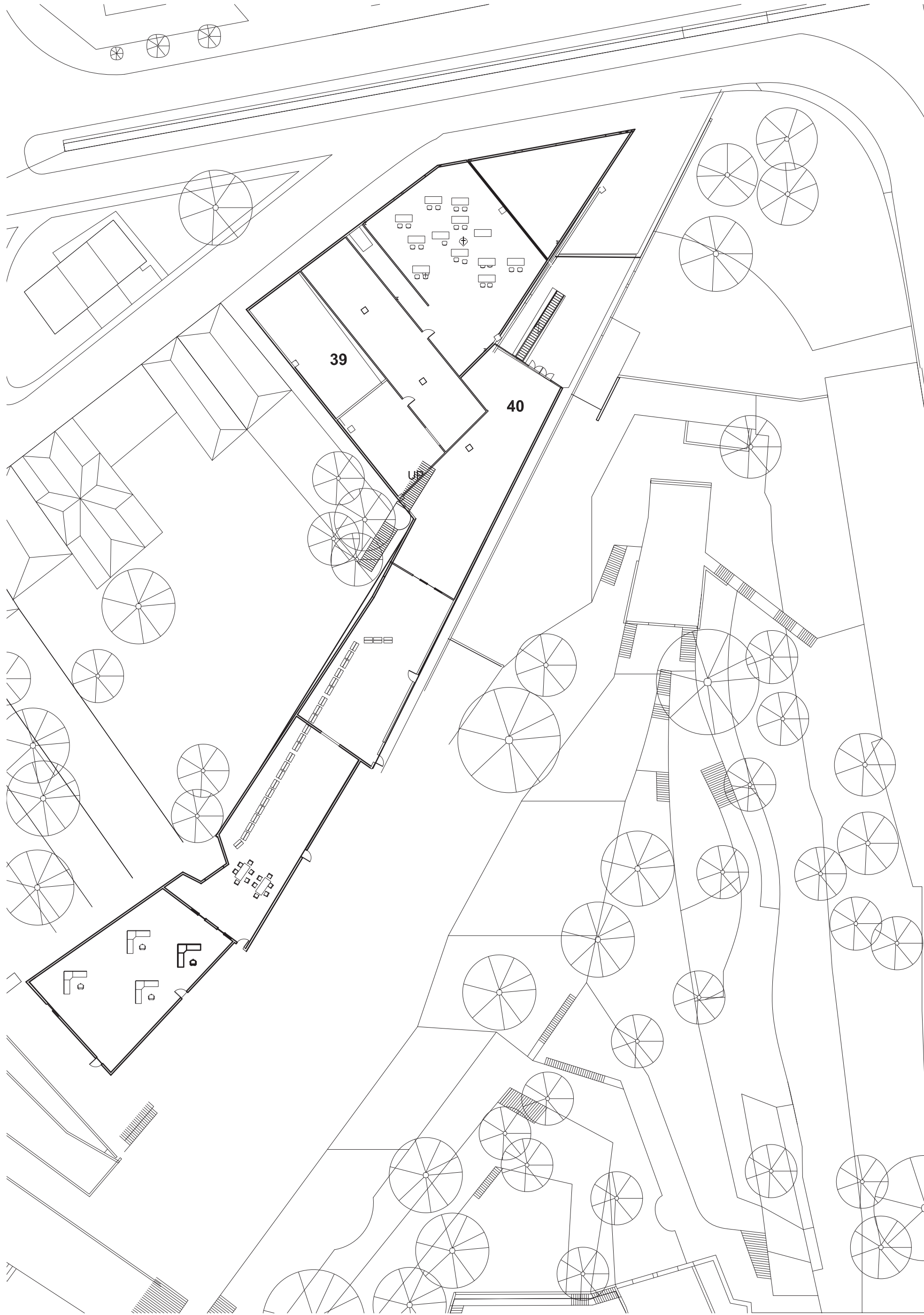
Exterior Concrete





Lowest Basement level -1 1/32"=1'

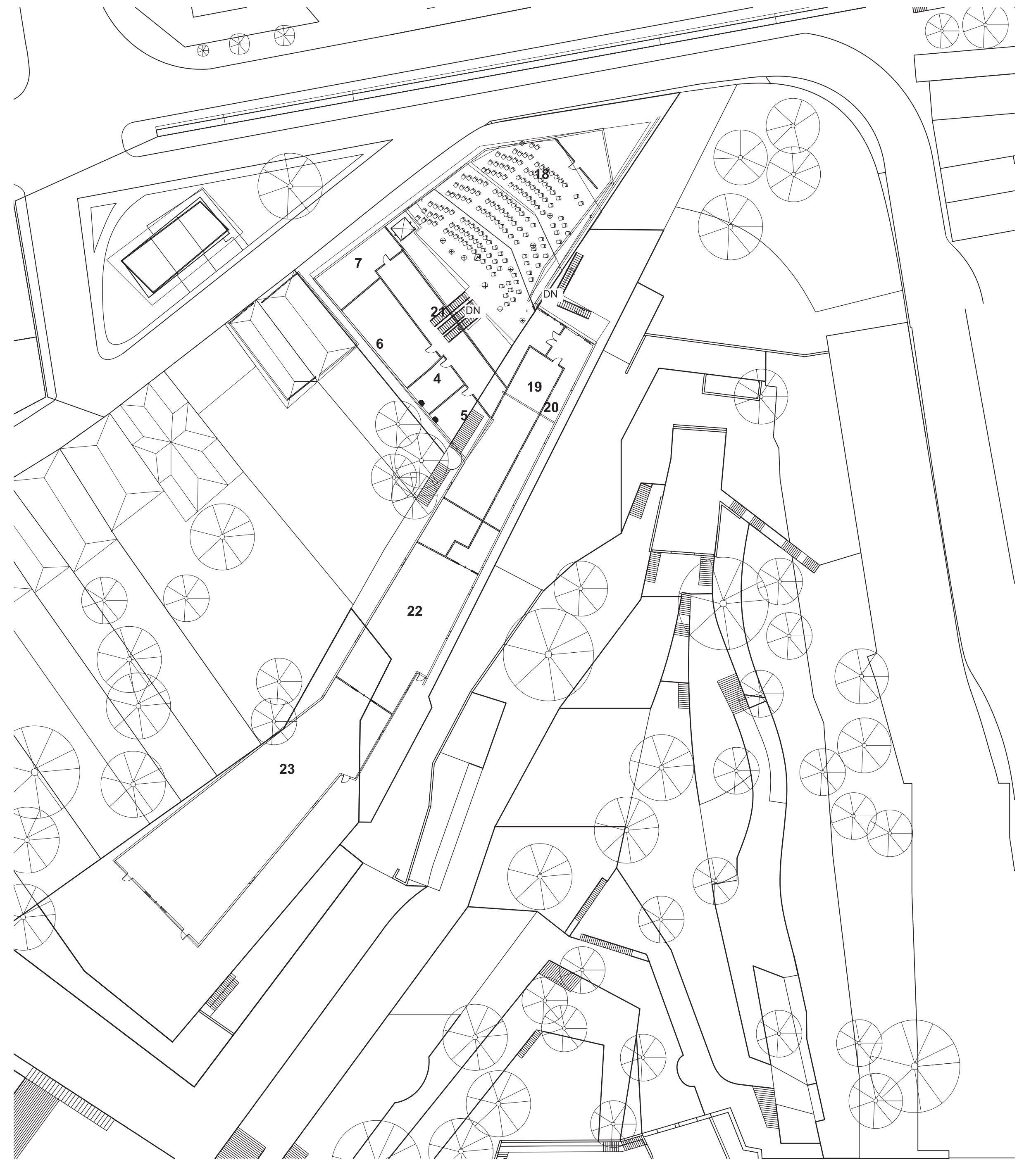
Room legend		
Porto Portugal casa de arquitectura		
		Square feet
exterior		
20,21,27	1	Main access
		service and delivery area
outdoor		landscaped spaces
outdoor		gardens
outdoor		terraces
outdoor		patios
public areas		
	38	entrance foyer
		3766
	16	bookstore/gift shop
		2152
	35	cafeteria
		1614
	18	auditorium (200 occ)
		3012.8
	36	exhibit hall 1
		6456
	37	exhibit hall 2
		3228
	24	classroom (divisible in 2)
		2152
	30	support room
		430.4
8,9,22,23		library/reading
		6994
	2	mens room
		645.6
	3	ladies room
		968.4
admin		
	10	offices
		4304
	31	mens room
		430.4
	3	ladies room
		645.6
technical / archive		
	33	lab
		1614
	15	collection/delivery area
		1614
	32	restoration workshop
		1398.8
	25	archive deposit
		8608
	26	documentation room (1)
		2690
	29	documentation room (2)
		2690
	19	technical
		538
	5	mens room
		430.4
	4	ladies room
		645.6
service areas		
	39	delivery dock
		1614
	40	loading area
		1291.2
	28	offices
		968.4
	32	model workshop
		269
	6	security room
		753.2
	41	mens room
		269
	42	womens room
		484.2
	7	staff rest area
		484.2
	32	mounting space
		1076
	19	technical areas
		3228
	11	pump room
		762
	12	boiler room
		769
	13	fan room
		385
	14	data room
		382
	17	projection
	27	mechanical



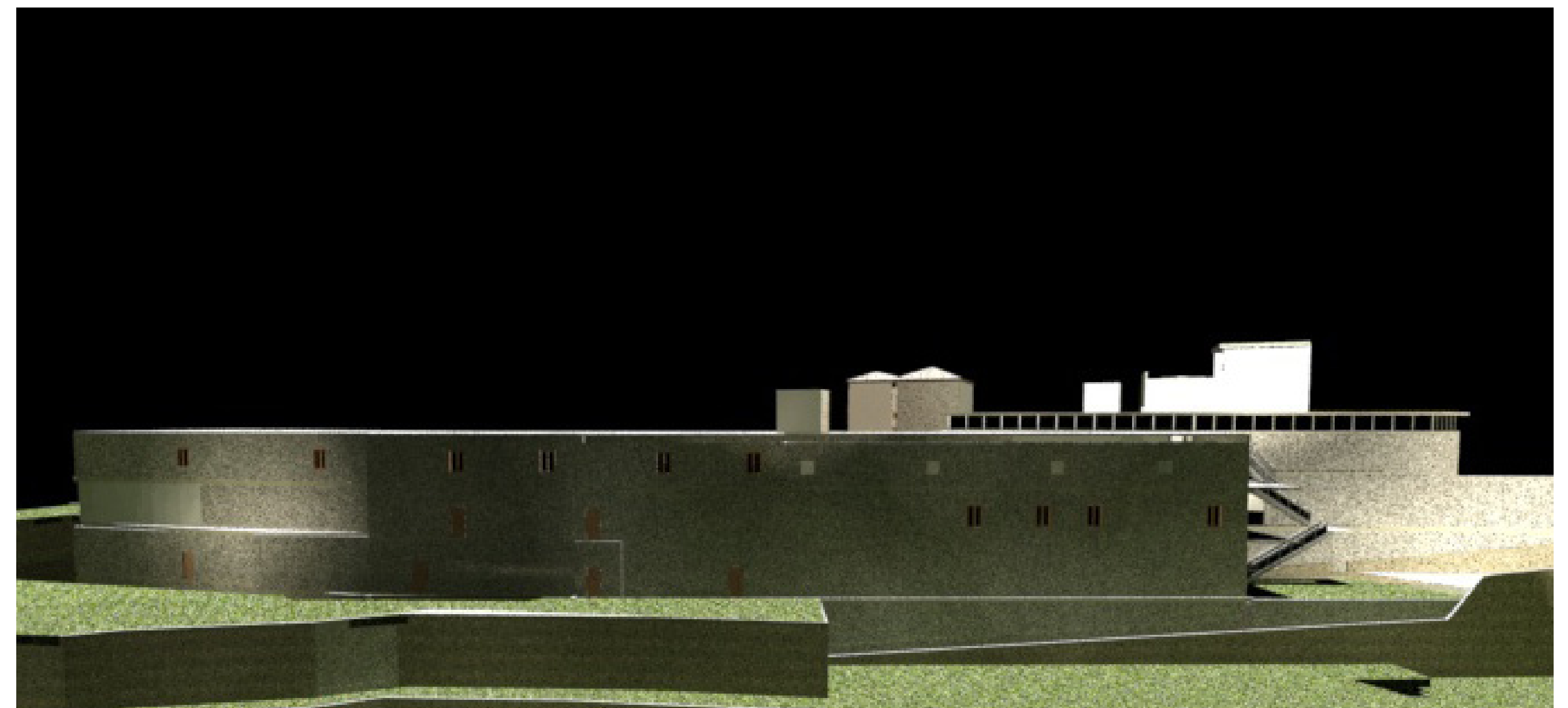
Basement level 0 1/32"=1'



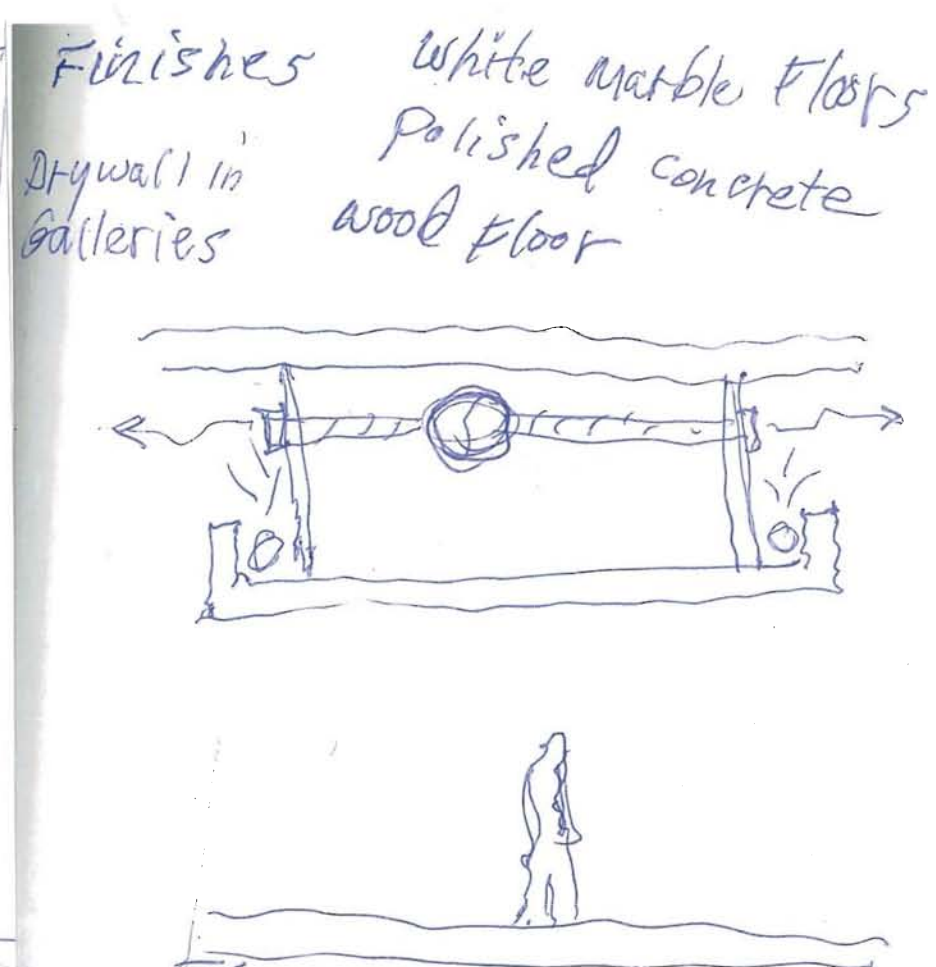
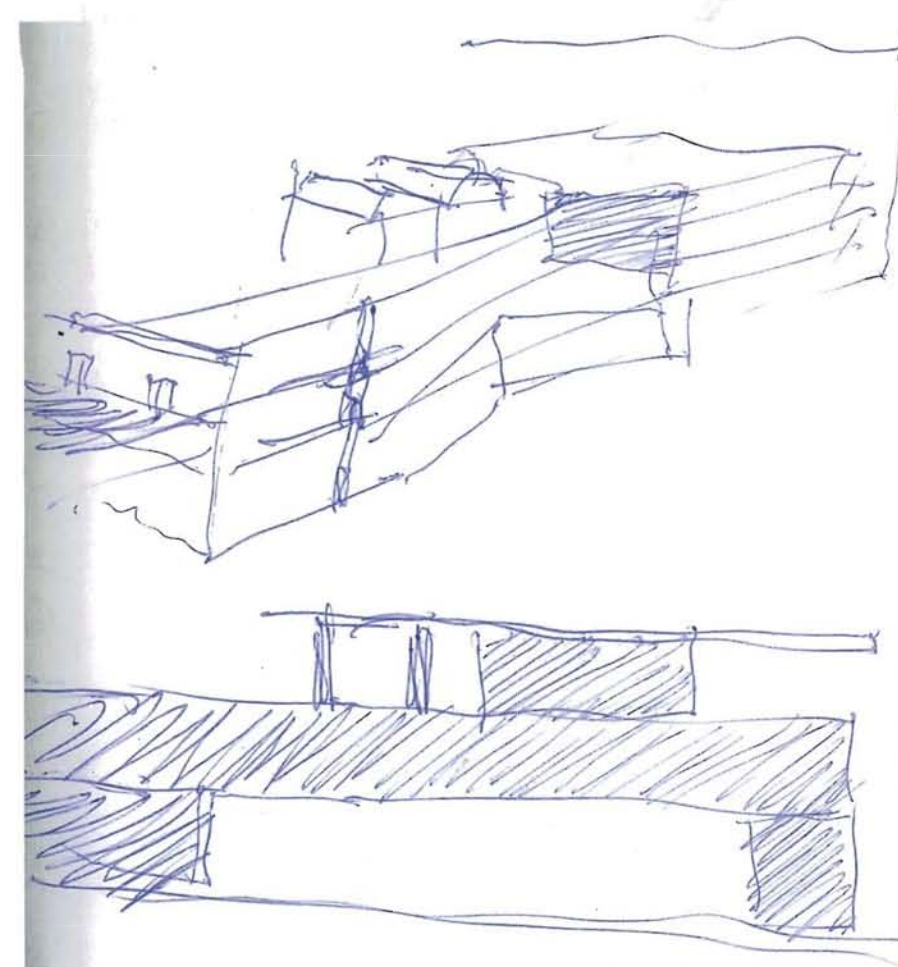
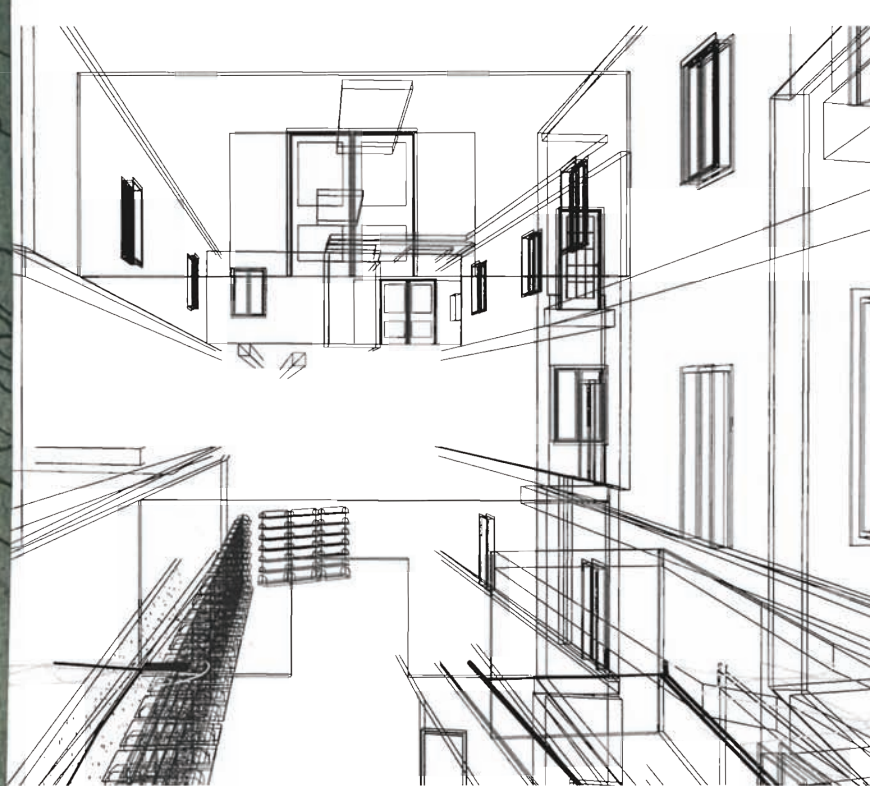
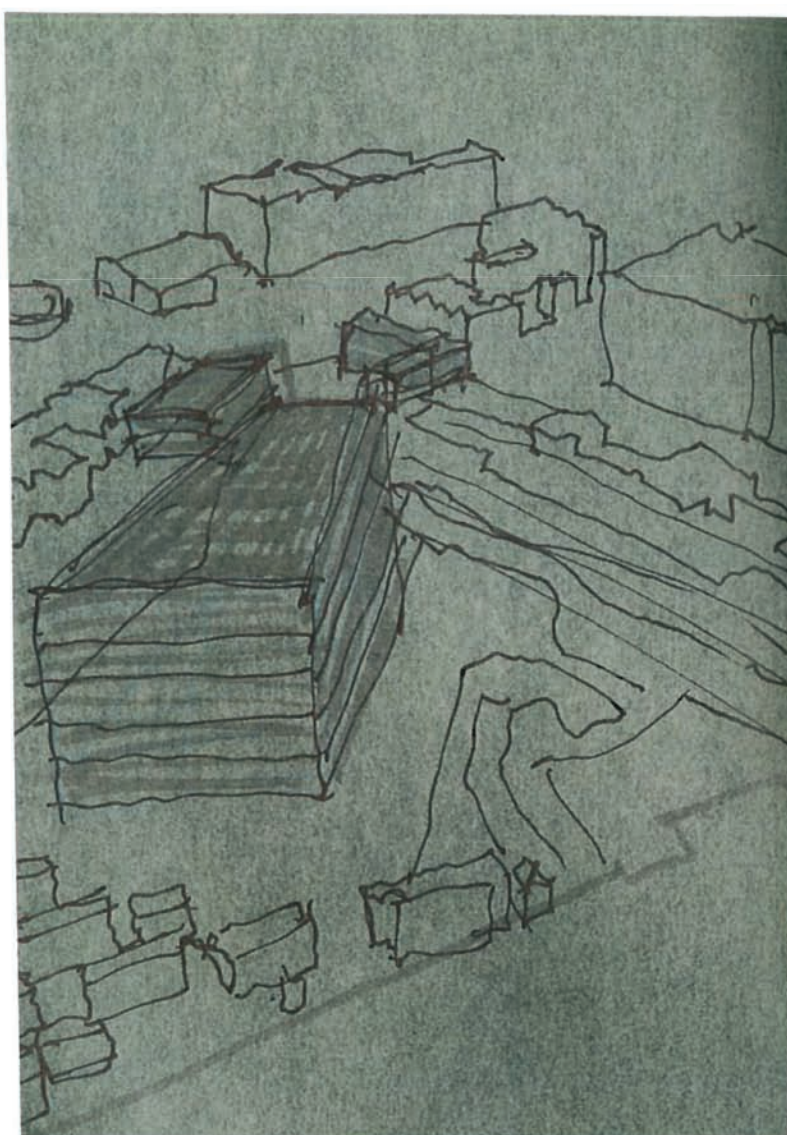
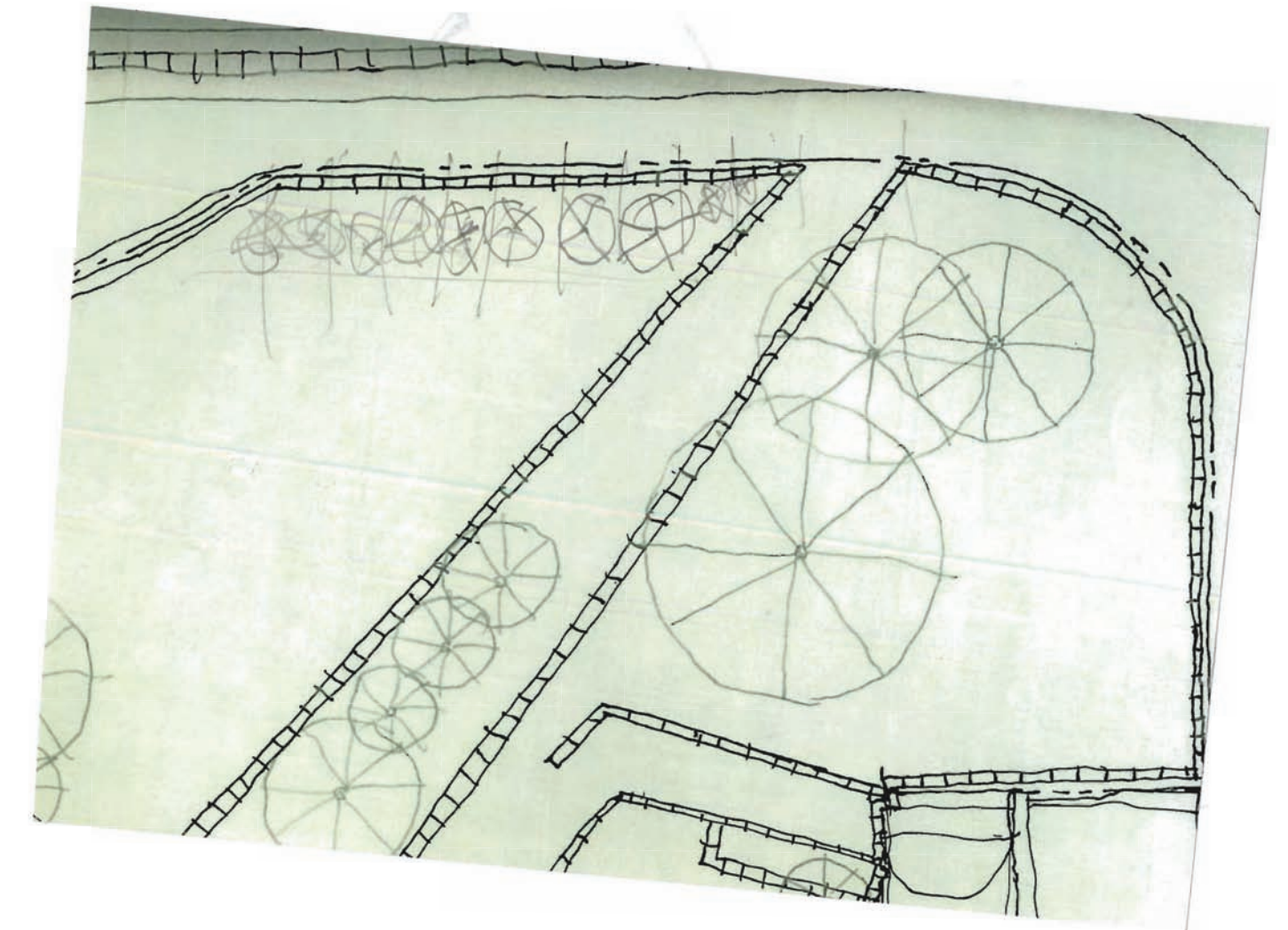
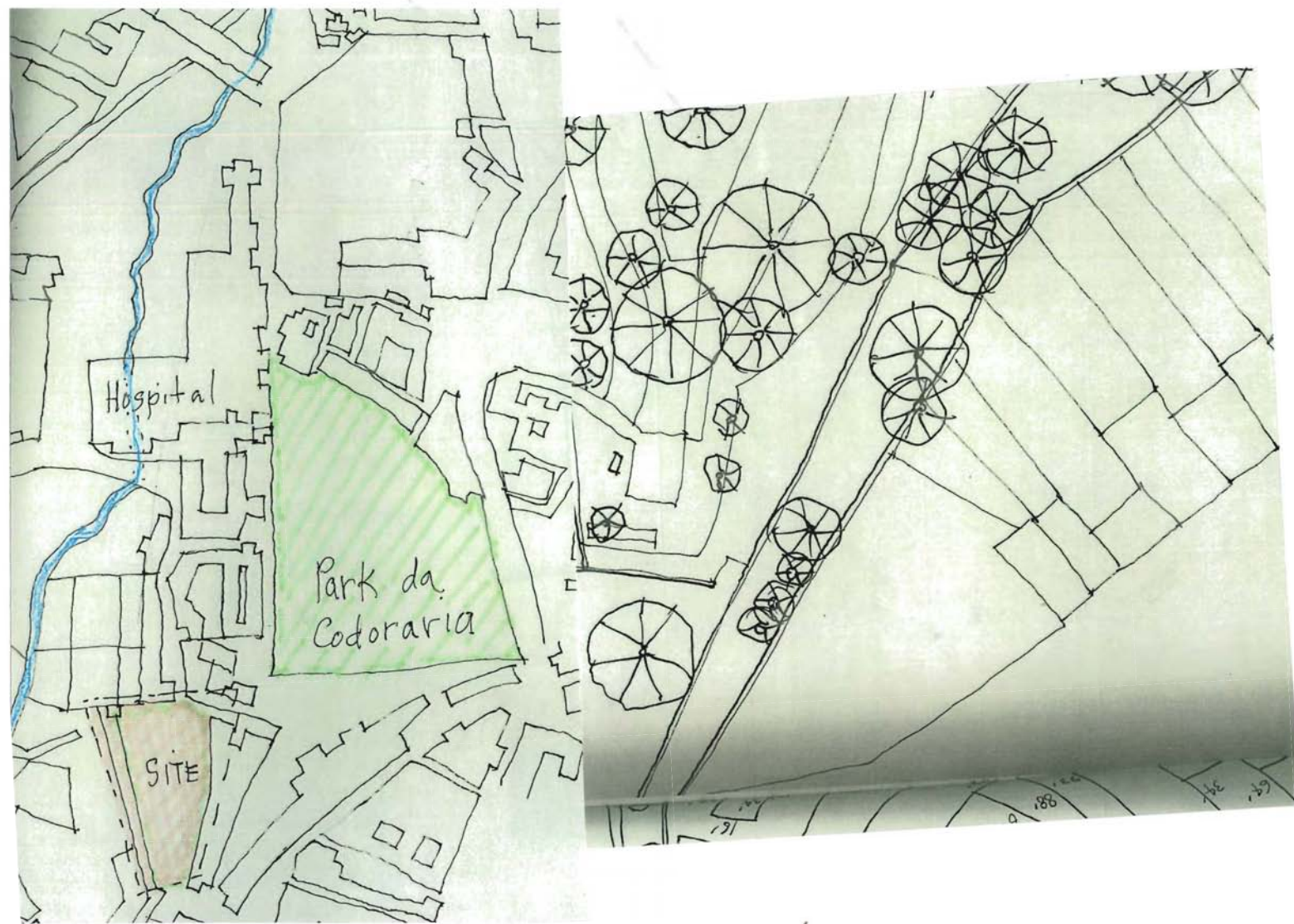
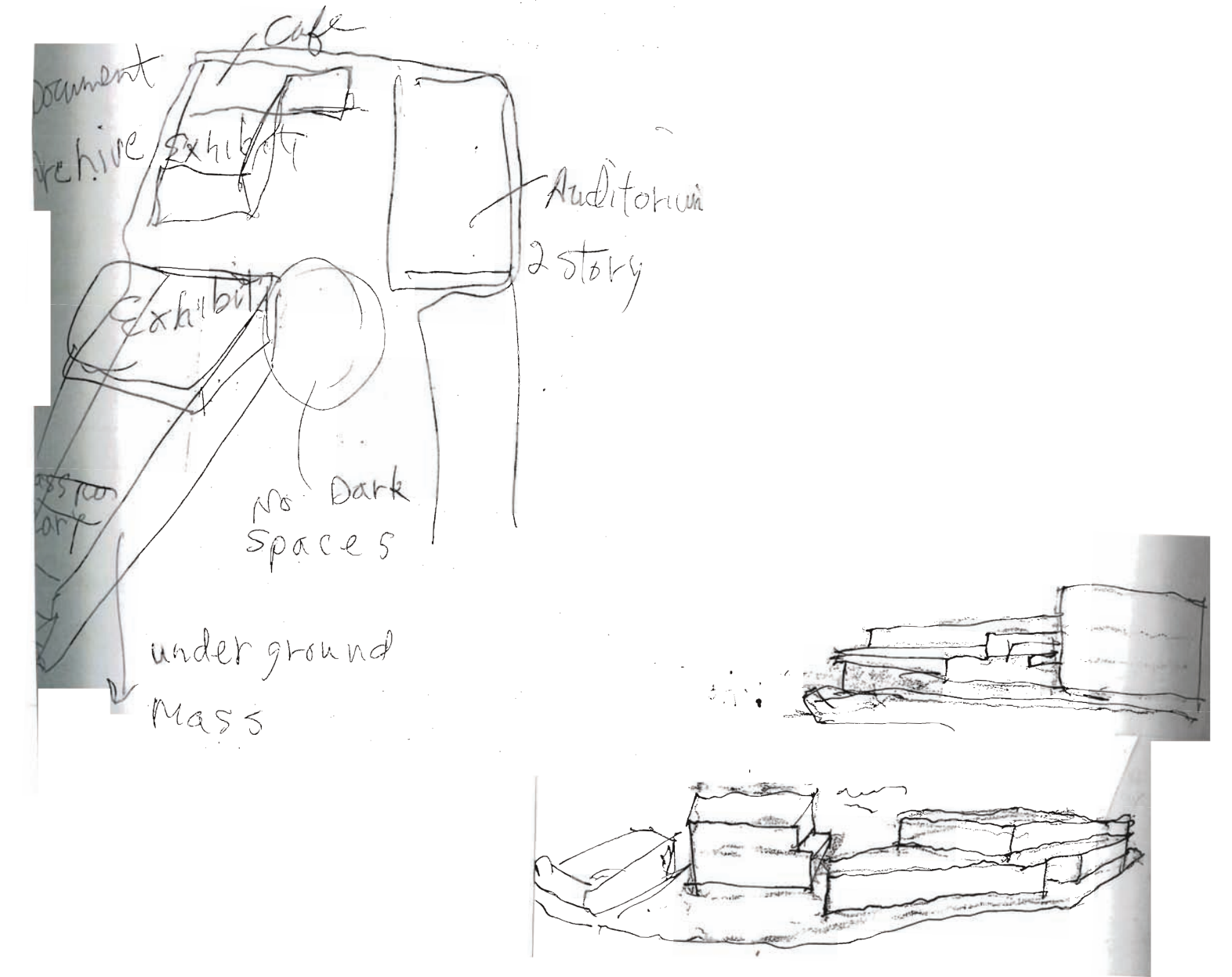
Ground level plan

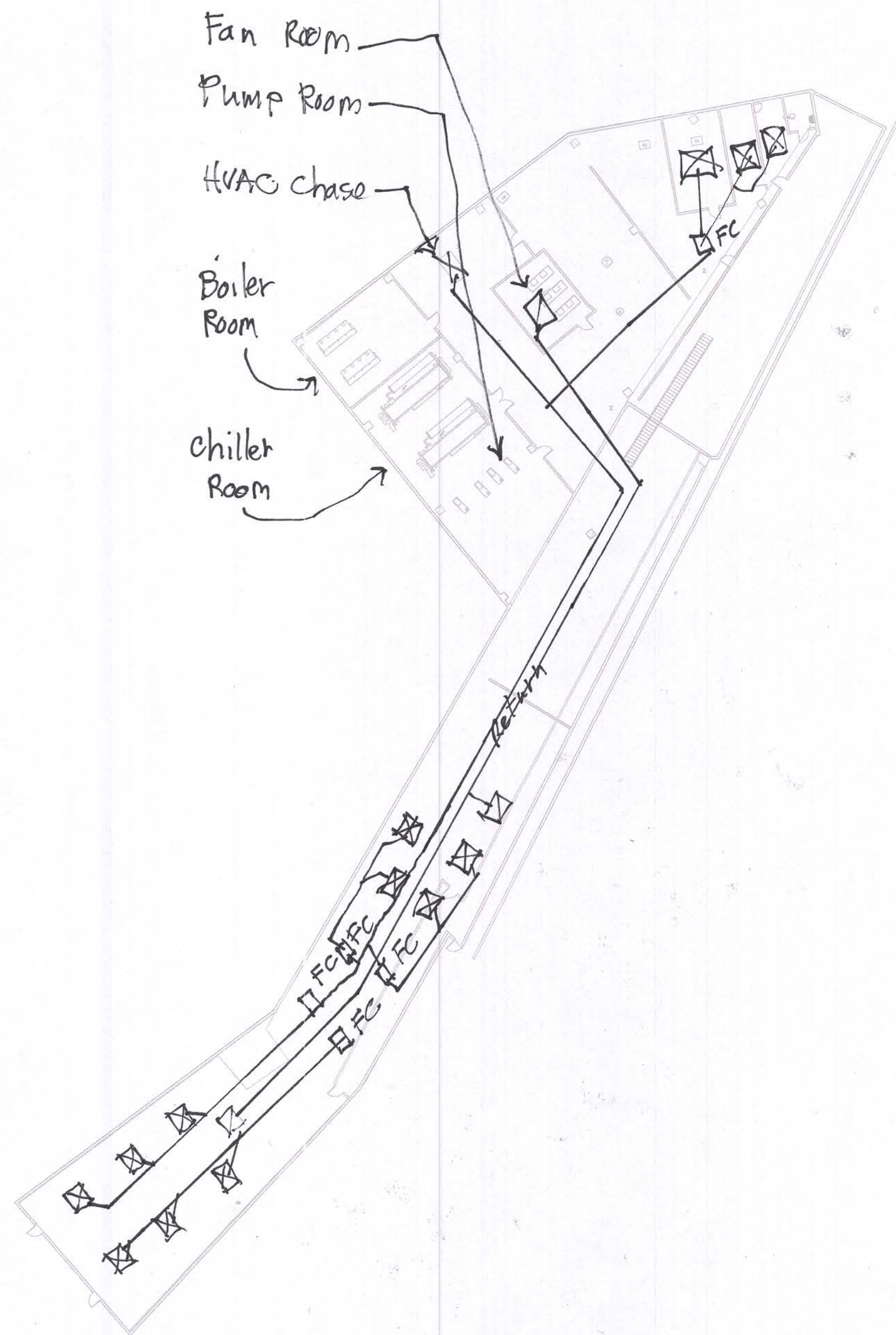


Second level plan 1"=16'

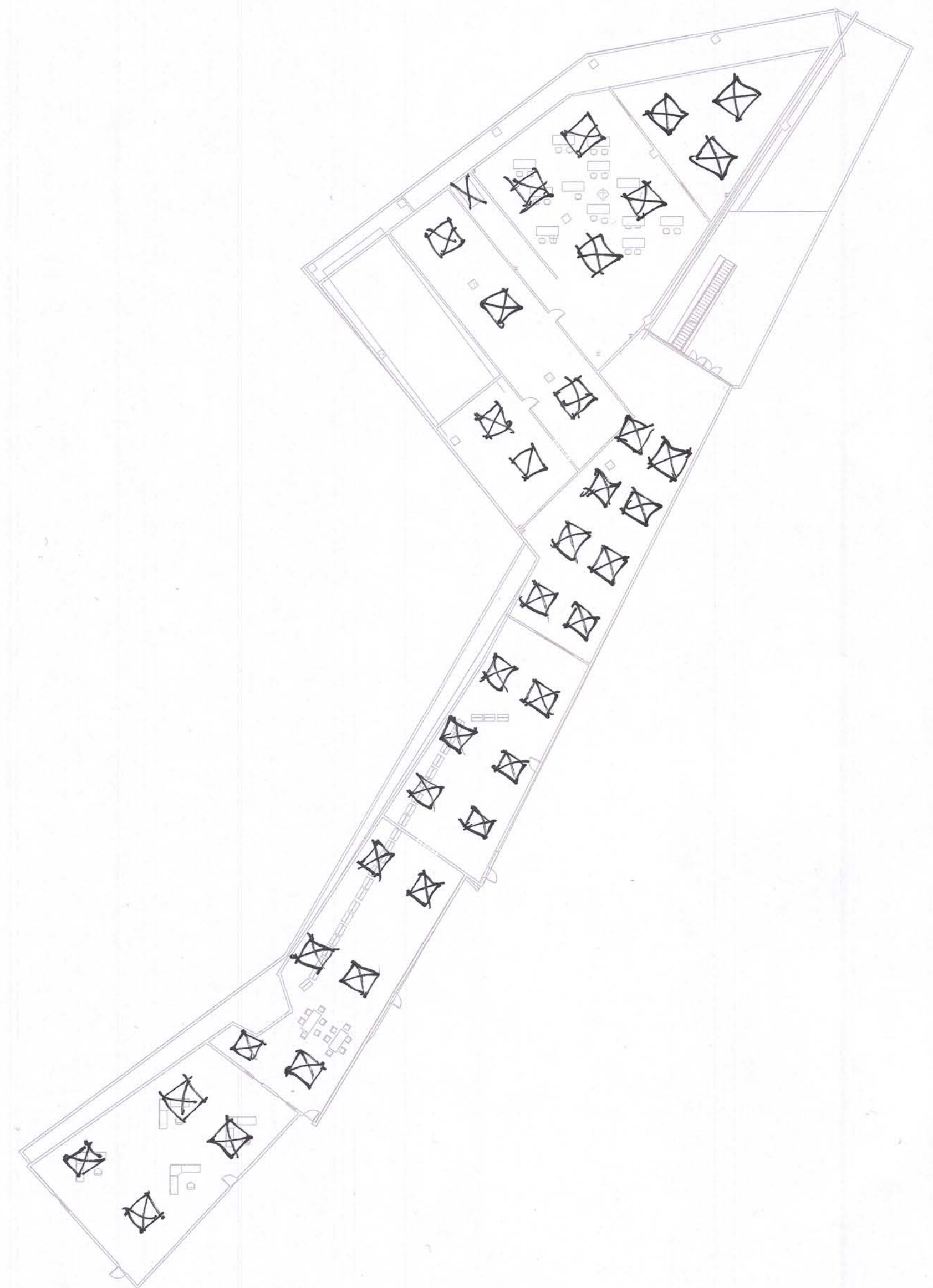






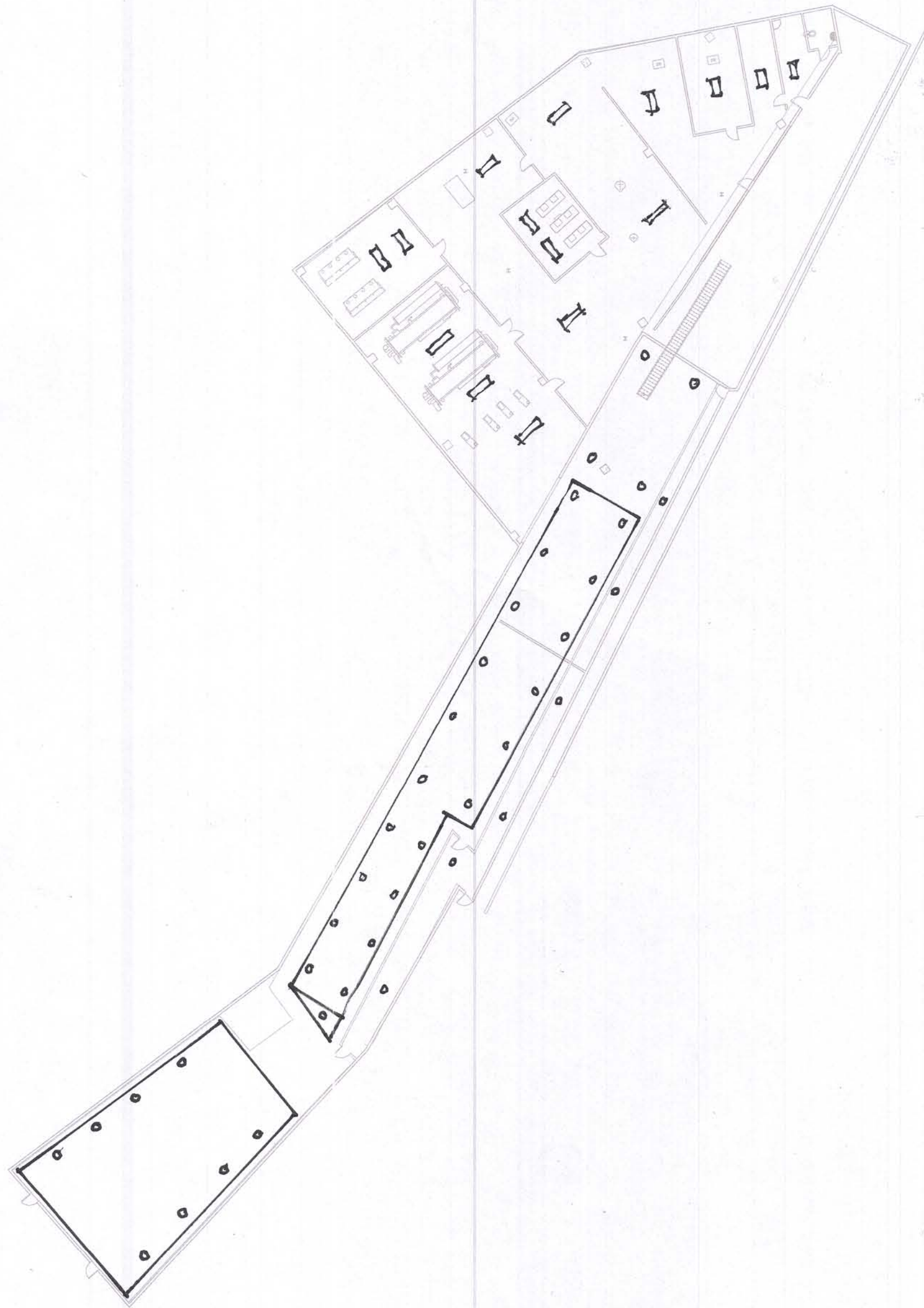


Reflected Ceiling Plans - HVAC

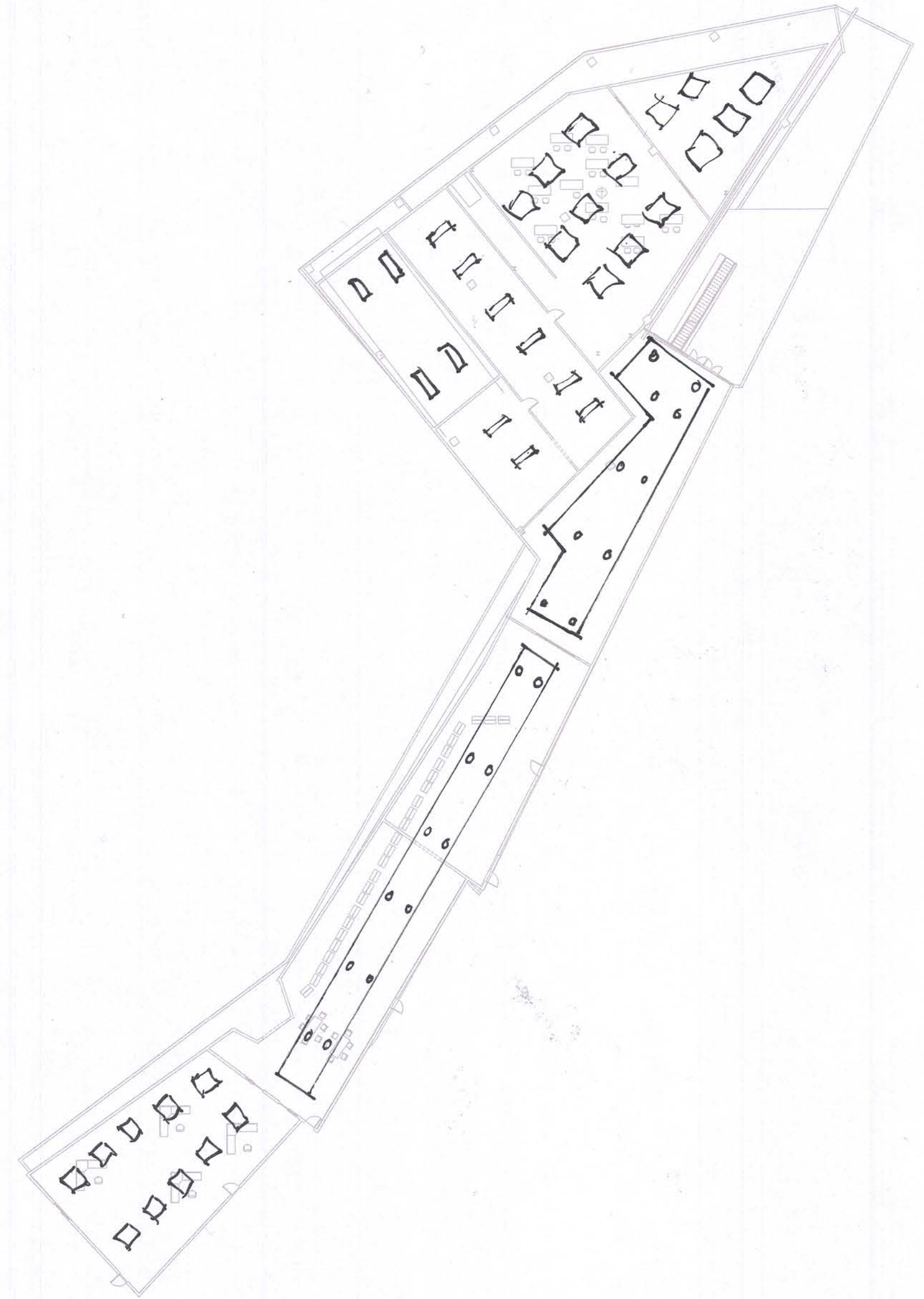


Lighting

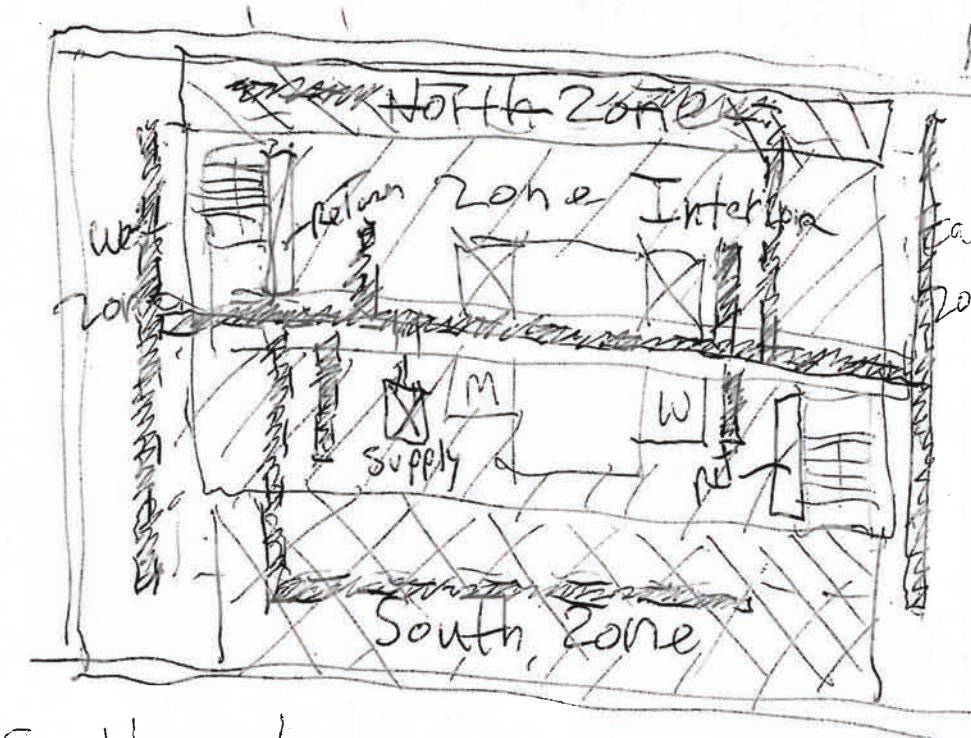
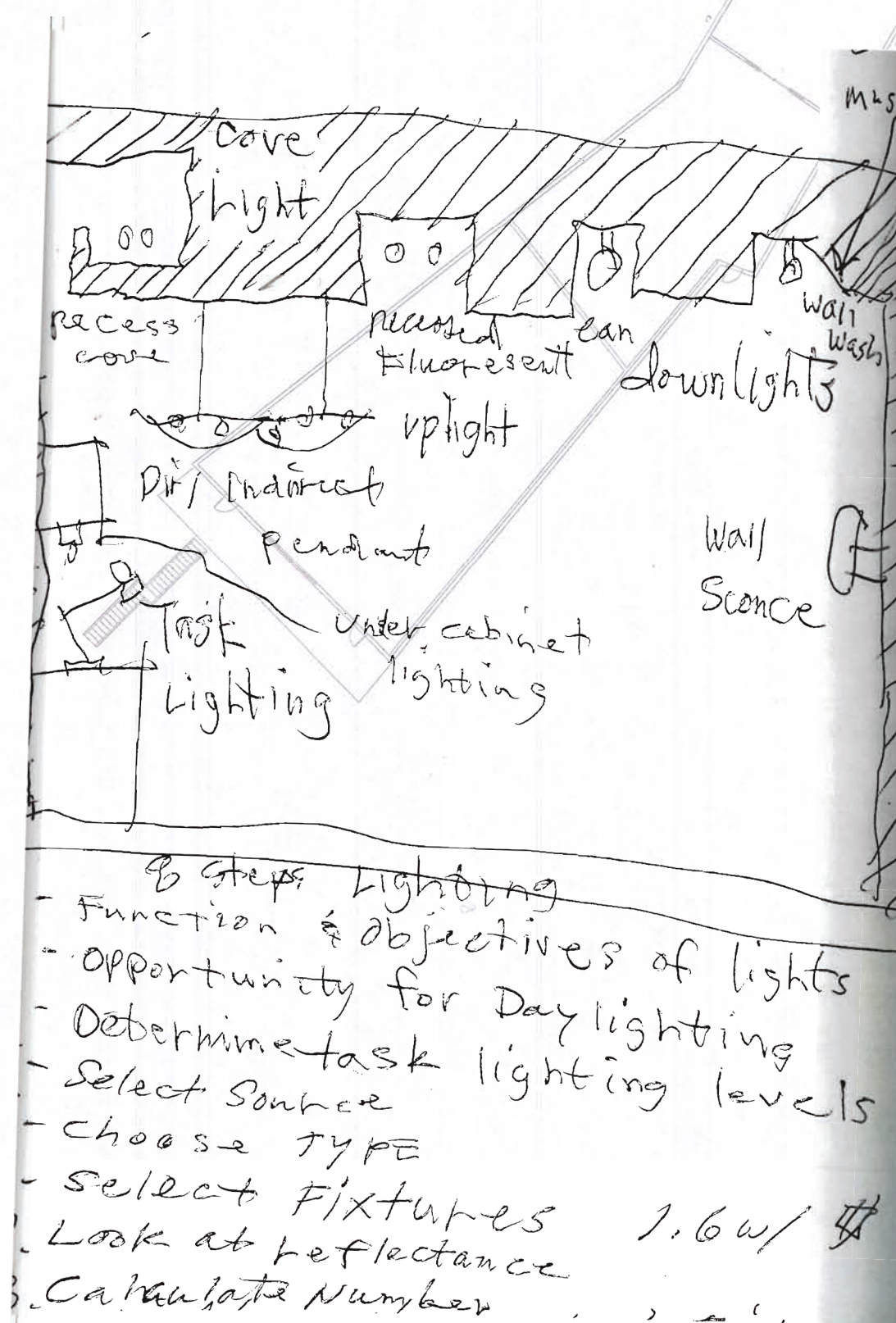
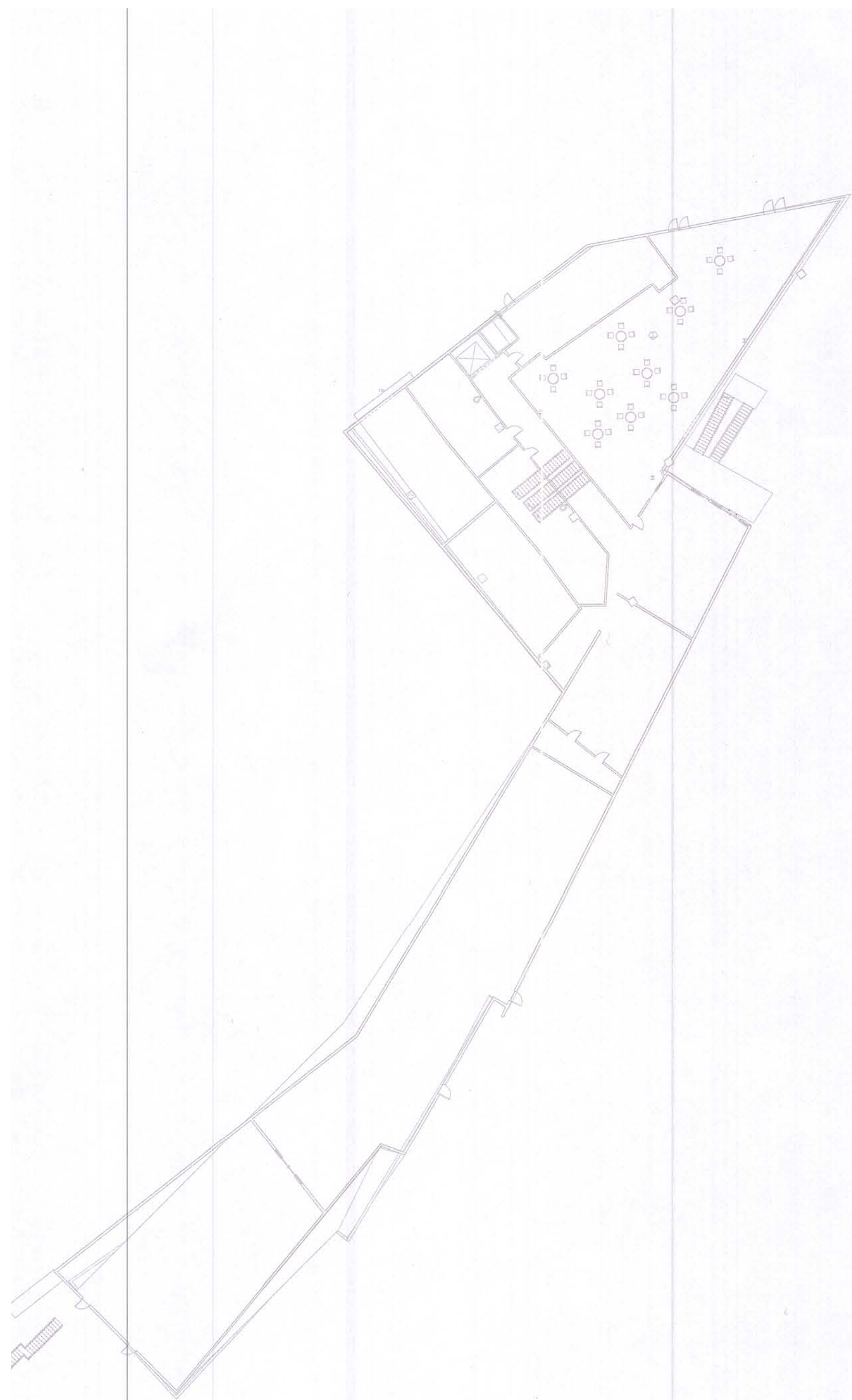
Lowest Basement level -1 1/32"=1'



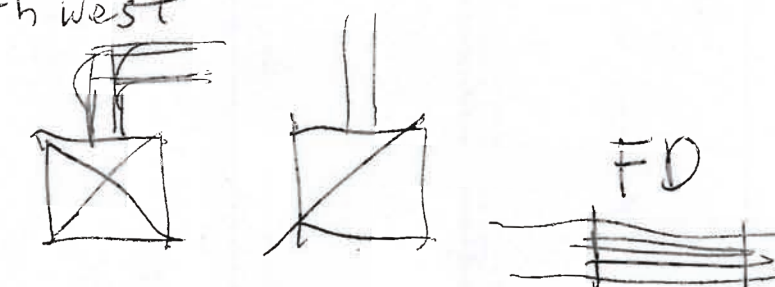
Basement level 0 1/32"=1'



Lighting

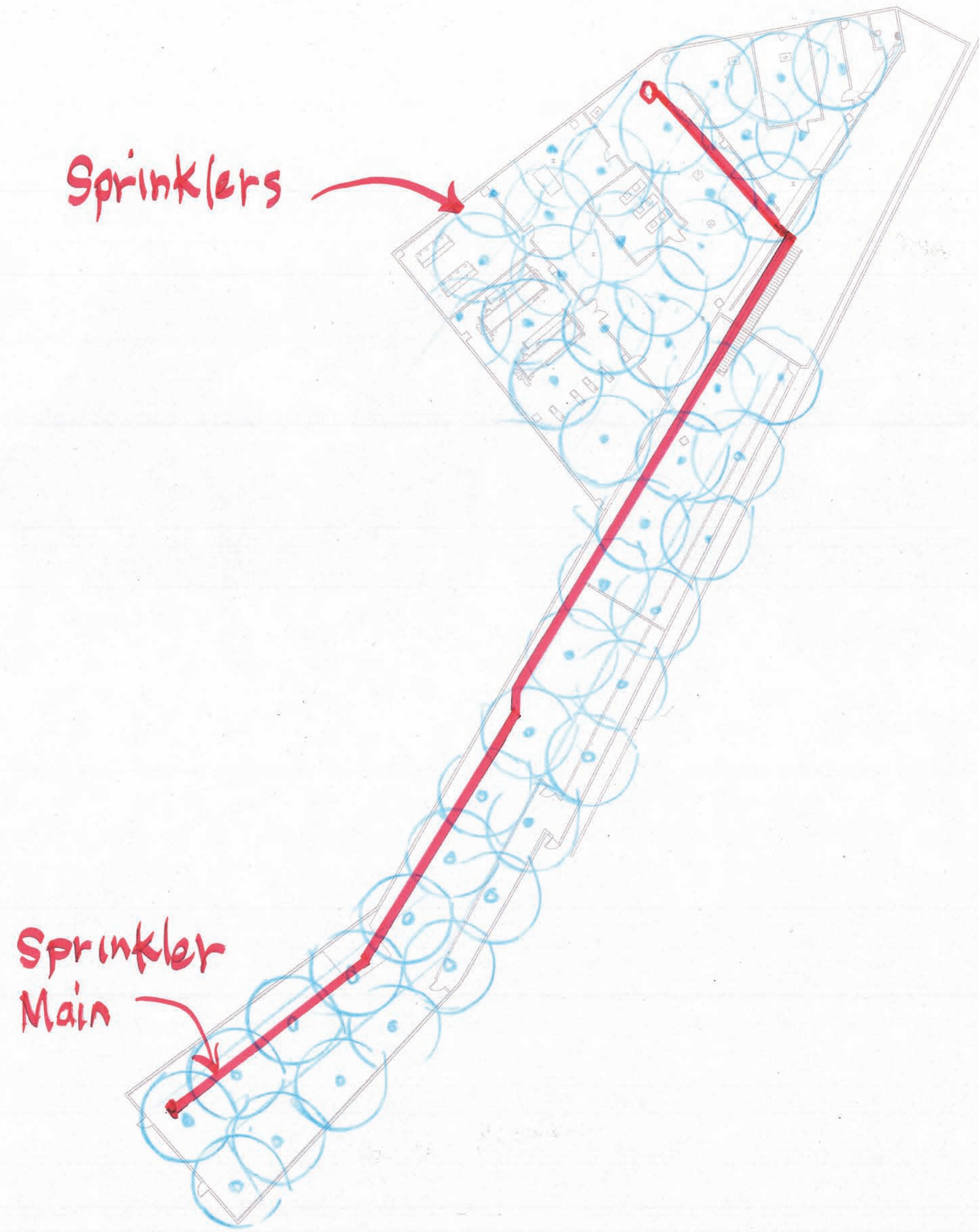


South west



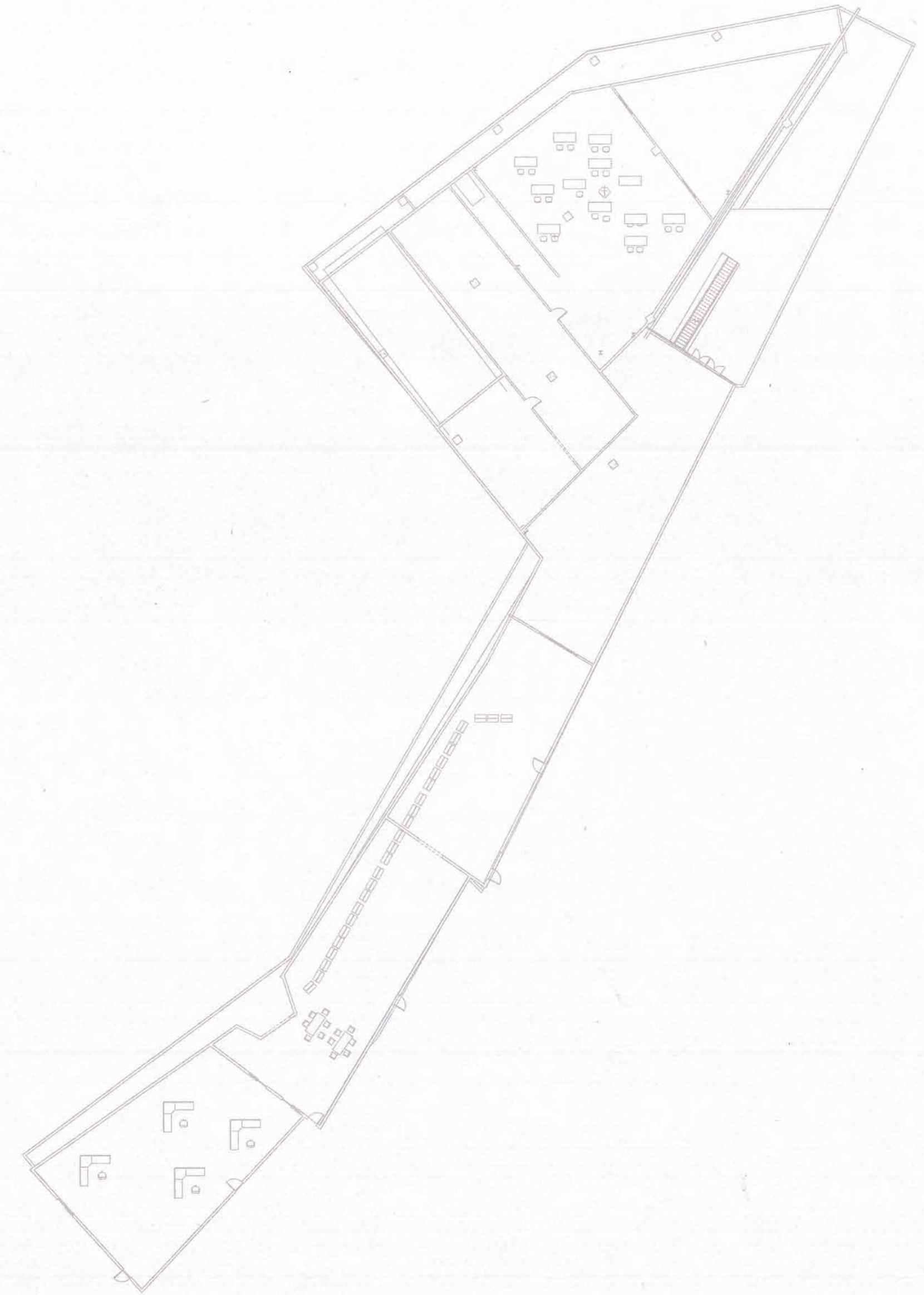
Supply Return

- 8 Steps Lighting
- Function & Objectives of lights
- Opportunity for Daylighting
- Determine task lighting levels
- Select Source
- Choose type
- Select Fixtures 1.6w/ft
- Look at reflectance
- Calculate Number



Sprinklers

Lowest Basement level -1 1/32" = 1'



Basement level 0 1/32" = 1'